

# State of Wyoming Corner Record

(In compliance with the *CORNER PERPETUATION AND FILING ACT*, Wyoming Statutes, 1997, Section 33-29-140, et. seq., and the Rules and Regulations of the Board of Registration for Professional Engineers and Professional Land Surveyors)

Reverse side of this form may be used if more space is needed.

Record of original survey and citation of source of historical information (if corner is lost or obliterated). Description of corner monumentation evidence found and/or monument and accessories established to perpetuate the location of this corner. Sketch of relative location of monument, accessories, and reference points with course and distance to adjacent corner(s) (if determined in this survey). Method and rationale for reestablishment of lost or obliterated corner.

G.L.O. Record: Charles A. Caton, U.S. Deputy Surveyor, July 22, 1873.  
 80.00 Chains Limestone 16x12x6 set 10 in deep marked with 1 notch on S side and 5 notches on E side for cor. to secs. 29,30,31,32

Land rolling: soil sandy: veg, grass.

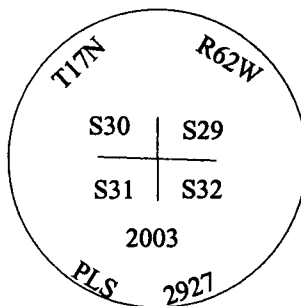
Subsequent Record: State of Wyoming Corner Record filed 3/14/2000 Bk# 1548 PG# 1585 by Mr. Robert W. Taylor, PLS 3891 indicates setting a 2" diameter aluminum cap flush with the asphalt, marked P.L.S. 3891 on a 1" x 30" Iron Pipe.

Found: P.K nail with Stainless Steel Washer marked "BM/TOR PLS 3891"

Set: At the accepted P.K nail position, I set a No. 5 x 24" rebar with 2 1/2" diameter aluminum cap, marked as noted below, 0.2' below the asphalt roadway. I have contacted Mr. Robert Taylor, PLS 3891 and indicated what I found at the corner position and that I have remonumented the point.

See back of this sheet for measurements to other found and or set and accepted corners in the area.

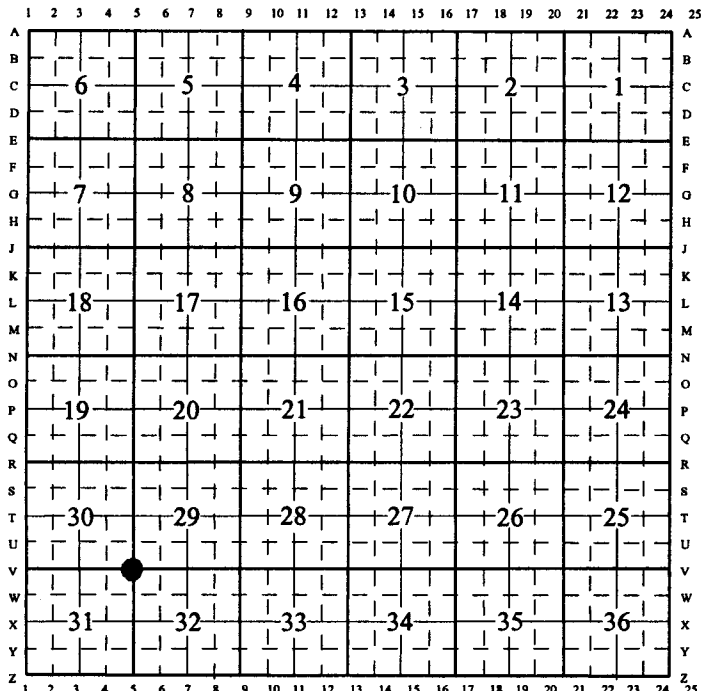
Aluminum Cap Markings



Date of Field Work: May 23, 2003

Office Reference: Burns North 26109

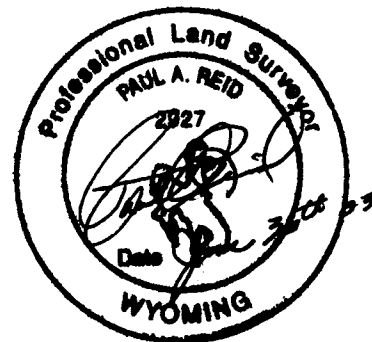
### CROSS INDEX DIAGRAM



Firm/Agency, Address

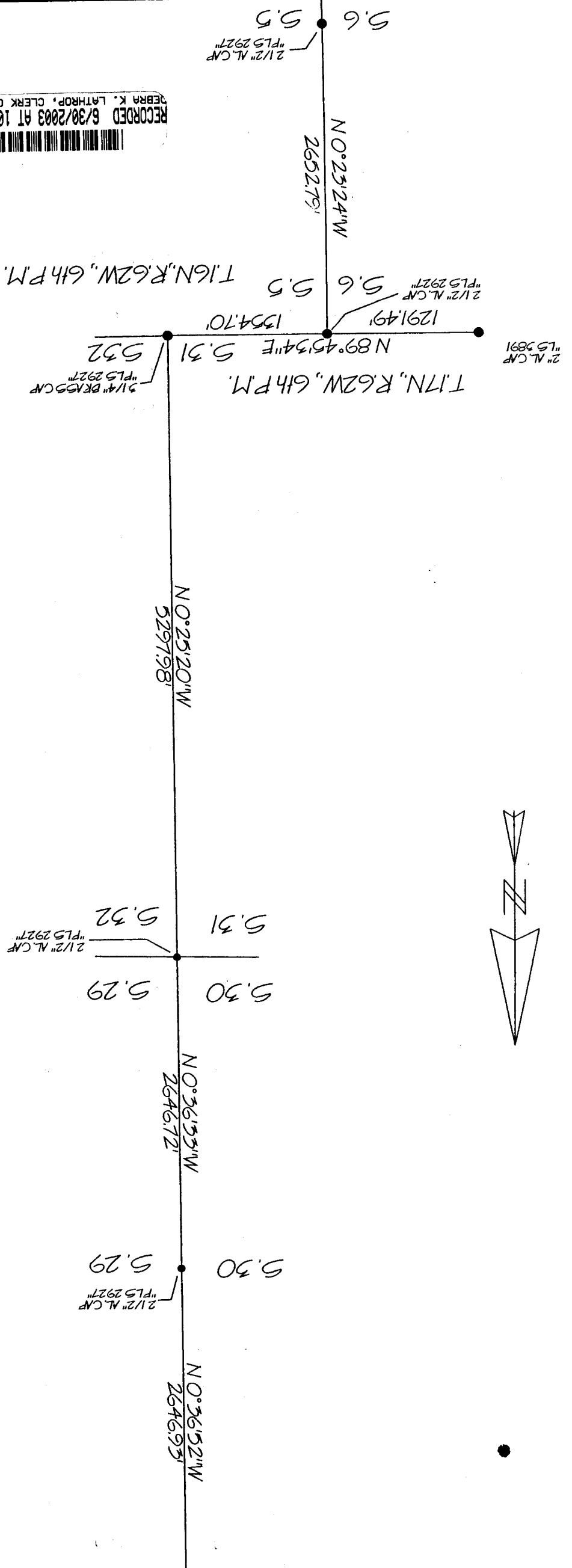
This corner record was prepared by me or under my direction and supervision.

*SEAL & SIGNATURE*



Corner Name: Northwest Section: 32 T.17N., R.62W., 6th P.M.,  
 SBRPEPLS/PLSW: MARCH 1994/97

Cross-Index No.: V-5



Bearings are grid and based upon the Wyoming East Zone NAD 83. Geodetic bearings can be derived by applying  $-0^{\circ}32'21''$  to the bearing.

